

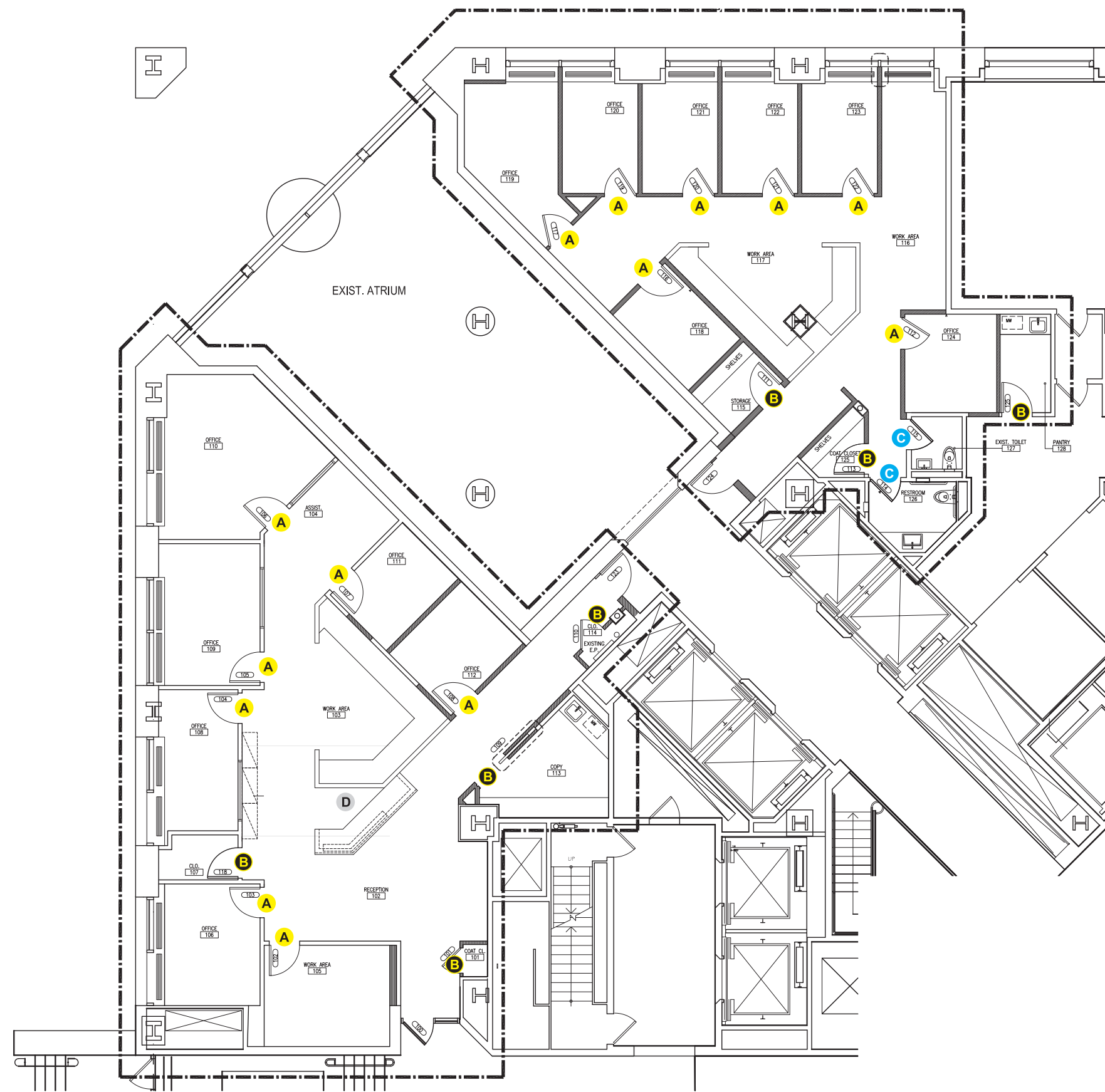
167 west 81st street, NYC
TEL: (212) 769-4992
FAX: (212) 496-9649
www.audreysigns.com
signs@audreysigns.com

CLIENT:

Hunter Roberts Construction
2 World Financial Center
6th Floor
New York, NY 10029
Steve Jones
212-321-6884

PROJECT:

Mt. Sinai Medical Center
Cancer Institute Executive Offices
Icahan Building, 1st Floor
1425 Madison Ave
New York, NY 10029



LEGEND:

OFFICE SIGNS	A	14
PERMANENT ROOM SIGNS	B	7
RESTROOM SIGN	C	2
DIMENSIONAL LETTERS	D	23

1st FLOOR

A OFFICE SIGNS



- 6”H x 8”W x .25”T
- Raised black graphics
- ADA compliant
- Satin Aluminum face
- Grade 2 Braille
- Two (2) 1”H inserts

B PERMANENT ROOM SIGNS



- 6”H x 8”W x .25”T
- Raised black graphics
- ADA compliant
- Silver Metallex acrylic
- Grade 2 Braille

C RESTROOM SIGN



- 8”H x 6”W x .25”T
- Raised black graphics
- ADA compliant
- Silver Metallex acrylic
- Grade 2 Braille

D DIMENSIONAL LETTERS

THE TISCH CANCER INSTITUTE

- 4”H x .25”T
- Pin Mounted
- Satin Stainless Steel

		1st FLOOR	TOTAL
OFFICE SIGNS	A	14	14
PERMANENT ROOM SIGNS	B	7	7
RESTROOM SIGN	C	2	2
DIMENSIONAL LETTERS	D	23	23